



Armchair / Sofa

Internal metal frame and cold-injection polyurethane foam. **Fire retardant foam meets California Bulletin 117A, EN1021-1/2:2014 and Italian Class 1 IM Standards.**

Special foam meeting the **5852 British Standards** is available on request.

Legs in steel with powder coated or chromed finish.

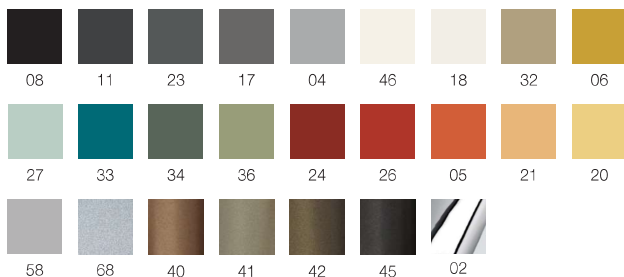
Covers: fabric, faux-leather, leather or C.O. M. (preferably in solid colours) with heavy duty Gros Grain welting.



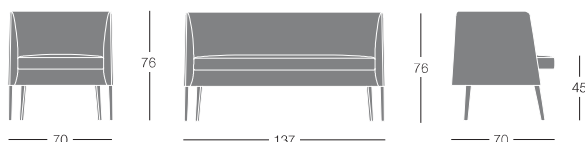
	Article	Upholstery	pcs / dimensions volume / gross weight product net weight
Armchair Metal legs	I200	Gazebo Xtreme Plus / Magnum / Rivet / Spinning / Sprint Blazer / Gingko / Step Melange Steelcut 2 / Steelcut Trio3 Leather C.O.L. C.O. faux leather / C.O.M. (solid colour)	1 pc / 74x74x57 cm 0,31 m ³ / 21 Kg 18,6 Kg
Sofa Metal legs	I201	Gazebo Xtreme Plus / Magnum / Rivet / Spinning / Sprint Blazer / Gingko / Step Melange Steelcut 2 / Steelcut Trio3 Leather C.O.L. C.O. faux leather / C.O.M. (solid colour)	1 pc / 139x74x57 cm 0,59 m ³ / 39 Kg 32,3 Kg

Finishes

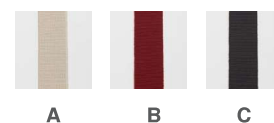
Metal legs



Dimensions



Gros Grain colours



Additional costs

Upholstery in two different materials
or two colours of the same material

Customer's own material

For customer's own material/leather, the form at the end of the price list shall apply, to be sent to Segis Spa with the Client's signature.

Art. I200 Solid fabric: for 1 pc 290 cm (H.140 cm)

C.O.L. qty: for 1 pc 4,20m²

Upholstery in two colours for 1 pc (H.140 cm): seat 80 cm / shell 210 cm

Art. I201 Solid fabric: for 1 pc 410 cm (H.140 cm)

C.O.L. qty: for 1 pc 6,20 m²

Upholstery in two colours for 1 pc (H.140 cm): seat 130 cm / shell 280 cm

Resistance tests

Armchair Agorà (art. I200)

Test ANSI-BIFMA X5.11 -2015/7 – backrest strenght test
Test ANSI-BIFMA X5.11 -2015/11 – seating durability test
Test ANSI-BIFMA X5.11 -2015/12 – stability test
Test ANSI-BIFMA X5.11 -2015/16 – back durability test

Armchair / Sofa

Internal metal frame and cold-injection polyurethane foam.
Fire retardant foam meets California Bulletin 117A, EN1021-1/2:2014 and Italian Class 1 IM Standards.

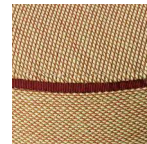
Special foam meeting the **5852 British Standards** is available on request.

Legs in oak.

Covers: fabric, faux-leather, leather or C.O. M. (preferably in solid colours) with heavy duty Gros Grain welting



	Article	Upholstery	pcs / dimensions volume / gross weight product net weight
Armchair Wood legs	I210 *	Gazebo Xtreme Plus / Magnum / Rivet / Spinning / Sprint Blazer / Gingko / Step Melange Steelcut 2 / Steelcut Trio3 Leather C.O.L. C.O. faux leather / C.O.M. (solid colour)	1 pc / 74x74x56 cm 0,31 m ³ / 21 Kg 18,6 Kg
Sofa Wood legs	I211 *	Gazebo Xtreme Plus / Magnum / Rivet / Spinning / Sprint Blazer / Gingko / Step Melange Steelcut 2 / Steelcut Trio3 Leather C.O.L. C.O. faux leather / C.O.M. (solid colour)	1 pc / 139x74x57 cm 0,59 m ³ / 39 Kg 32,3 Kg

**Gros Grain colours****Finishes**

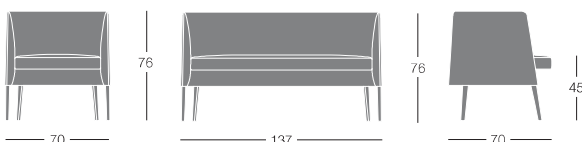
Wood legs FSC™ certified



RO 02 RO 03



The mark of
responsible forestry
FSC® C156379

Dimensions**Additional costs**

Upholstery in two different materials
or two colours of the same material

Customer's own material

For customer's own material/leather, the form at the end of the price list shall apply, to be sent to Segis Spa with the Client's signature.

Art. I210* Solid fabric: for 1 pc 290 cm (H.140 cm)

C.O.L. qty: for 1 pc 4,20m²

Upholstery in two colours for 1 pc (H.140 cm): seat 80 cm / shell 210 cm

Art. I211* Solid fabric: for 1 pc 410 cm (H.140 cm)

C.O.L. qty: for 1 pc 6,20 m²

Upholstery in two colours for 1 pc (H.140 cm): seat 130 cm / shell 280 cm



Bench

Plywood frame and polyurethane foam with lining of polyester padding.

Fire retardant foam meets California Bulletin 117A, EN1021-1/2:2014 and Italian Class 1 IM Standards.

Special foam meeting the **5852 British Standards** is available on request.

Legs in steel with powder coated or chromed finish or oak.

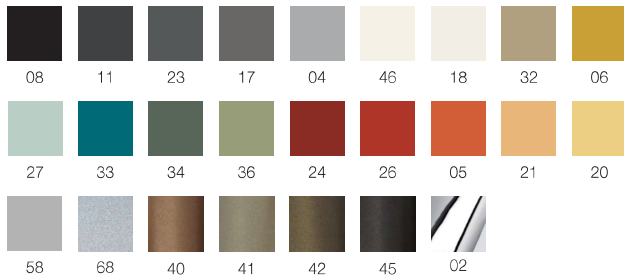
Covers: fabric, faux-leather, leather or C.O. M. (preferably in solid colours) with heavy duty Gros Grain welting.



	Article	Upholstery	pcs / dimensions volume / gross weight product net weight
Bench Metal legs	I202	Gazebo Xtreme Plus / Magnum / Rivet / Spinning / Sprint Blazer / Gingko / Step Melange Steelcut 2 / Steelcut Trio3 Leather C.O.L. C.O. faux leather / C.O.M. (solid colour)	1 pc / 19x168x89 cm 0,28 m ³ / 28,5 Kg 24,5 Kg
Bench Wood legs	I212 *	Gazebo Xtreme Plus / Magnum / Rivet / Spinning / Sprint Blazer / Gingko / Step Melange Steelcut 2 / Steelcut Trio3 Leather C.O.L. C.O. faux leather / C.O.M. (solid colour)	1 pc / 19x168x89 cm 0,28 m ³ / 28,5 Kg 24,5 Kg

Finishes

Metal legs



Wood legs - FSC™ certified



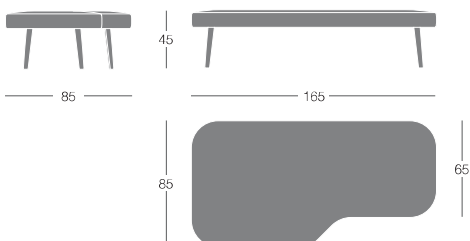
The mark of
responsible forestry
FSC® C155379



Gros Grain colours



Dimensions



Additional costs

Upholstery in two different materials
or two colours of the same material

Customer's own material

For customer's own material/leather, the form at the end of the price list shall apply, to be sent to Segis Spa with the Client's signature.

Art. I202 / I212*

Solid fabric: for 1 pc 190 cm (H.140 cm)

C.O.L. qty: for 1 pc 2,86 m²

Round ottomans in two dimensions

Ø 73 or Ø 123 cm, available with six castors
or with 6 thermoplastic glides.

Base in black thermoformed plastic material.

Frame in plywood and polyurethane foam with lining of polyester padding.

Fire retardant foam meets California Bulletin 117A, EN1021-1/2:2014 and Italian Class 1 IM Standards.

Special foam meeting the **5852 British Standards** is available on request.

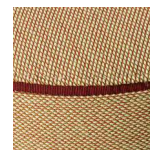
Covers: fabric, faux-leather, leather or C.O. M. (preferably in solid colours) with heavy duty Gros Grain welting.



	Article	Upholstery	pcs / dimensions volume / gross weight product net weight
Ottoman Ø 73 cm	I204	Gazebo Xtreme Plus / Magnum / Rivet / Spinning / Sprint Blazer / Gingko / Step Melange Steelcut 2 / Steelcut Trio3 Leather C.O.L. C.O. faux leather / C.O.M. (solid colour)	1 pc / 74x74x48 cm 0,26 m ³ / 13,5 Kg 10,5 Kg
Ottoman Ø 123 cm	I205	Gazebo Xtreme Plus / Magnum / Rivet / Spinning / Sprint Blazer / Gingko / Step Melange Steelcut 2 / Steelcut Trio3 Leather C.O.L. C.O. faux leather / C.O.M. (solid colour)	1 pc / 124x126x48 cm 0,75 m ³ / 30 Kg 24 Kg

Glides

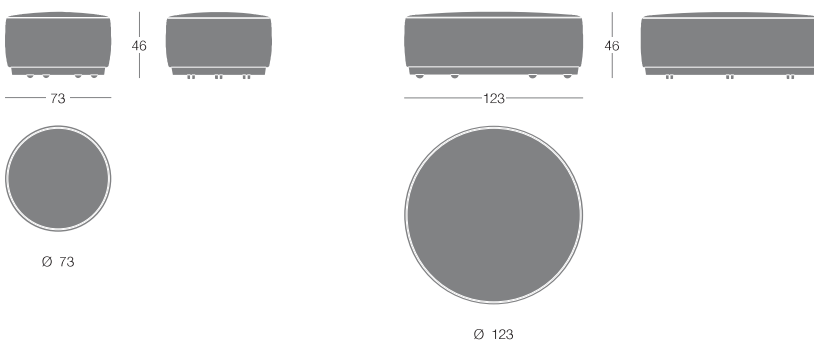
Castors

**Gros Grain colours**

A

B

C

Dimensions**Customer's own material**

For customer's own material/leather, the form at the end of the price list shall apply, to be sent to Segis Spa with the Client's signature.

Art. I204

Solid fabric: for 1 pc 180 cm (H.140 cm)

C.O.L. qty: for 1 pc 2,7 m²

Art. I205

Solid fabric: for 1 pc 320 cm (H.140 cm)

C.O.L. qty: for 1 pc 4,9 m²

Ottoman-stool

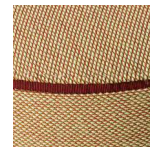
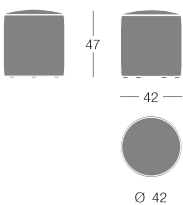
Covers: fabric, faux-leather, leather or C.O.M (preferably in solid colours) with heavy duty Gros Grain welting.



	Article	Upholstery	pcs / dimensions volume / gross weight product net weight
Ottoman Ø 42 cm - H. 47 cm	I213	Gazebo Xtreme Plus / Magnum / Rivet / Spinning / Sprint Blazer / Gingko / Step Melange Steelcut 2 / Steelcut Trio3 Leather C.O.L. C.O. faux leather / C.O.M. (solid colour)	1 pc / 43,5x43,5x50 cm 0,09 m ³ / 6,5 kg 5,6 kg



Dimensions



Gros Grain colours



Customer's own material

For customer's own material/leather, the form at the end of the price list shall apply, to be sent to Segis Spa with the Client's signature.

Art. I213
Solid fabric: for 1 pc 110cm (H.140 cm)
C.O.L. qty: for 1 pc 1,6 m²